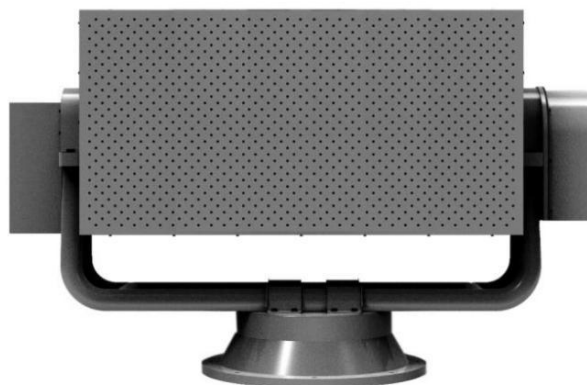


# DSP2000

## Acoustic Hailing Device



### *Features*

- Adopt the top speaker unit, with high sensitivity and high SPL.
- With all-weather design, waterproof, moisture-proof and shock-proof.
- With high STI, up to 0.85 at a distance of 100 meters.

### *Specifications*

Model	DSP2000
MAX. SPL. (100m)	≥115dB (System built-in dispersing sound)
Rated SPL. (100m)	≥85dB (Distortion limited maximum SPL.)
Effective Frequency Range	500Hz~5kHz (-10dB)
STIPA	≥0.80@100m
Radiation Angle	≤ Horizontal 25° × Vertical 30° (-6dB, 2kHz)
Ground Effective Broadcast Distance	≥4Km
Listening Intelligibility	≥80%
Continuous Working Time	≥6h
Net Weight	≤155kg (with PTZ)
Dimensions (W×H×D)	≤1350mm×500mm×330mm